

# St Mary's Newsletter

Spring Term – Friday 27th February 2026

Telephone 01799 523384

Email: [info@st-maryscofe.essex.sch.uk](mailto:info@st-maryscofe.essex.sch.uk)

Website: [www.stmaryssw.org.uk](http://www.stmaryssw.org.uk)



APPROVED TRAVEL PLAN 2025



Attendance Weekly 95.3%

Attendance Year 96.2%

*Our motto: Let Your Light Shine... as You Grow inspired by Matthew 5: 15-16*

Compassion

Friendship

Perseverance

Respect

Trust

Truthfulness

Dear parents, carers and friends of the school,

## Grow15 Campaign Launches at St Mary's!

We are thrilled to announce that St Mary's **Grow15 Campaign** — our exciting, hands-on fundraising initiative designed to spark creativity, teamwork, and entrepreneurial spirit across our school community—is now firmly underway!

**The Challenge... Turn £1 into £15:** As part of the Grow15 Campaign, every pupil has been given **£1** and challenged to use their imagination, determination, and business skills to grow it into **£15 or more**. From baking and crafting to organising mini-events, offering services, or designing games, pupils are encouraged to think like young entrepreneurs. The possibilities are endless — and we can't wait to see the incredible ideas they bring to life!

**How Families Can Help:** We warmly encourage families and friends to support pupils in their ideas — whether that's helping them plan, promoting their mini-businesses, or simply becoming their first customers! Your encouragement and enthusiasm will play a vital role in their success.

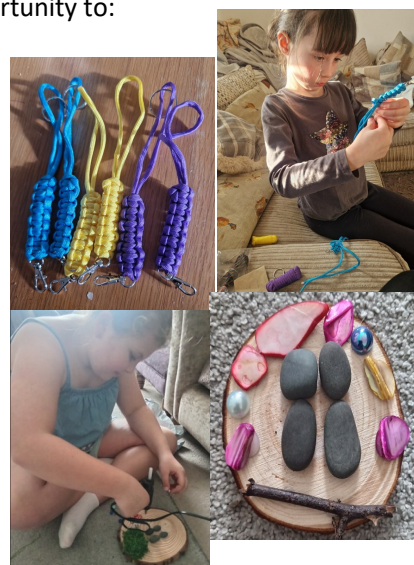
**Why Grow15?** This campaign is about much more than fundraising. It gives children the opportunity to:

- ◆ Develop financial awareness
- ◆ Build confidence and resilience
- ◆ Practise teamwork and communication skills
- ◆ Experience real-world problem-solving
- ◆ Learn about enterprise and innovation

Most importantly, pupils will see first-hand how their efforts can make a meaningful difference to their own school community with immediate and much needed upgrades to the school's toilet facilities and classrooms in the Summer term onwards.

## How is our Grow15 Fundraising Campaign going so far?

A HUGE thank you to some of our pupils and their families and friends who have already begun their fundraising. The wonderful **Ruby Rule** has been extremely busy making really creative lanyard keyrings as part of the Grow15 and has already made over £20 in sales! The amazing **Ruby Barker** has made her own pebble-crafts for her family to buy. Have a look at the photos of both of the girls in action and their wonderful handiwork!



Just a reminder that we will be sharing photos and updates of your children hard at work each week, so please don't forget to email your photos into the school office along with a line or two about what they have been up to. If you need any help, please do not hesitate to contact the school office and we will be glad to help! Good luck!

## Stars of the Week

**Claudia**—for doing so well in her Maths.

**Oluwanifemi**—for her brilliant energy in our dance practice this week

**Ranveer**—for excellent effort in Maths and always challenging himself

**Hugo**—for his focus and effort to develop his writing

**Joshua**—for always showing kindness and consideration to others

**Kobe**—for his perseverance in showing the school values

**Maja**—for always having a consistent work ethic and being helpful

**Freya**—for her effort and enthusiasm for reading

**Christianus**— for his attention to detail with creating his mosaic in Art

**Chloe**—for helping create a space for people to play less competitive versions of games

**Calum**—for his focus, concentration and enthusiasm across all subjects this week

**Gracie**—for her positive attitude towards all of her learning

**Heida**—for excellent independent writing

**Sienna**—for her enthusiastic and imaginative ideas in Drawing Club



### **House triumphs!**

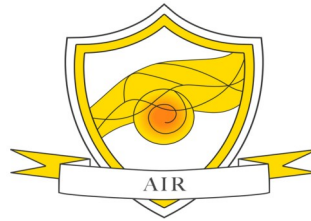
These are the results for this week: in 1st place with 72 points was Fire House; in 2nd place with 58 points was Water House, in 3rd place with 54 points was Air House and in 4th place with 40 points was Earth House. Well done everybody!



**1st place  
(72 points)**



**2nd place  
(58 points)**



**3rd place  
(54 points)**



**4th place  
(40 points)**



### **Friends of St Mary's—Don't Miss Our Rainbow Raffle - Drawn 6th March!**

Our Rainbow Raffle is back - and this year's hampers are the best yet. Each colour-themed hamper is packed full of fantastic donated goodies, making them bigger and better than ever before.

Tickets are on sale now and every ticket purchased helps us continue raising funds for the school. If you haven't entered yet, now's the time.

The draw will take place on 6th March, so make sure you're in it to win it!

You can buy your tickets here:

<https://www.peoplesfundraising.com/raffle/RainbowRaffle2026>

Thank you for your continued support - we can't wait to see who our lucky winners will be!

Have a great weekend

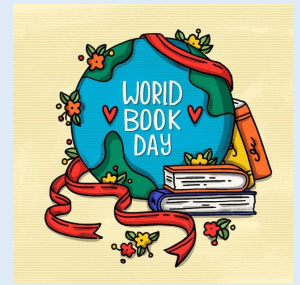
*Mr C. D. Jarman*

Headteacher of St Mary's Church of England Primary school, Saffron Walden

## World Book Day Celebrations - Thursday 5th March and Monday 16<sup>th</sup> March

### Thursday 5<sup>th</sup> March

- Children are invited to come to school dressed as their favourite book character. We are not expecting families to buy anything new — please use whatever you already have at home. Simple and creative ideas are absolutely welcome, and we look forward to seeing a wonderful range of costumes.
- Reception and Year 1 children will need to wear something that is suitable for Forest School. This also applies to any child who is due to have PE on a Thursday.
- Dolce will be hosting a special themed menu on the day. Please ensure orders are placed in advance via School Grid (menu is attached).
- Each child will also be coming home with a World Book Day token, which can be used towards the purchase of a new book. Please note that Scholastic Book Fair will not be visiting the school this year, you can use these tokens in a book shop.



### Monday 16<sup>th</sup> March

- Our celebrations will continue on Monday 16th March with a Poetry Dance Workshop. This will be a fantastic opportunity for the children to explore poetry through movement and creativity. We are asking for a £3.00 contribution towards the cost of the workshop, this can be paid via School Money.
- Children should come to school wearing their PE kits on this day.

If you have any questions regarding the above, please do not hesitate speak to a member of your child's class team.

## Parent/Carers Consultation Meetings (Tuesday 10th March and Thursday 12<sup>th</sup> March)

Appointments for the parent consultations are available to book from **Tuesday 24th February** via our Parent's Evening System which can be found at <https://stmarys.schoolcloud.co.uk/>.

**Please arrive promptly for your meeting.** The meetings will be face to face and held in the main school hall from 3.30pm - 6.30pm, with each family having the opportunity to make a 10 minute appointment per child. Please book your appointment before the **booking system closes on Monday 9th March at 12.00pm.**

**If your child has already had a One Plan meeting then there is no requirement to book an appointment, as you would have already had your 20 minute meeting.**


In order to log on securely parents/carers will need to put in their name as given to the school, your child's given name (or chosen first name as given to the office) and your child's date of birth as an 8 digit number e.g. 25/09/2008.



If you need any assistance with booking your appointment, please contact the school office on 01799 523384.

### Thursday 5th March

Parent/Carer Book Look/Share Our Work sessions:  
8.30am to 9am (NOT Reception) & 3.15pm to 4pm

A vibrant, colorful illustration for the World Book Day 2026 menu. The background is a deep blue space with stars and a large yellow star in the top right. A yellow banner at the top contains the text 'WORLD BOOK DAY' in white, with a globe icon for the letter 'O'. Below the banner, a large blue planet is shown with a yellow 'GOLDEN TICKET' floating on its surface. A yellow rocket with a red nose cone and a smiling face is launching from the bottom left. Various cartoon characters are scattered throughout: a boy with a cape flying, a blue dragon, a girl with wings, Garfield the cat, a boy with a backpack, a girl with a crown, and a white rabbit. A rainbow planet is at the bottom. Confetti and colorful bunting are scattered across the scene.

# WORLD BOOK DAY

5th  
March  
2026

## MAINS

Peter Pan's Pizza Choice

Rapunzel's Golden Locks Pasta (VG)

Goldilocks & The Three Bears Wrap Bar

## SIDES

Fairy Godmother Fries

Jack's Magic Beans

Princess and the Peas (...and the Sweetcorn)

## DESSERTS

Red Velvet Riding Hood Brownie (V)

Fruit Yoghurt (V)

Fresh Fruit (VG) (GF)

# Young Artists' Summer Show

## 2026

The Young Artists' Summer Show is a free, open submission exhibition for young artists aged 4–18 living and studying in the UK.

Students can submit one artwork for consideration which will be judged by a panel of artists and arts professionals. Selected artworks will be displayed at the Royal Academy of Arts either onsite or online. The RA will award prizes for inspiring artworks.

---

### How to enter

From 5 January 2026, teachers will be able to register their school. Next, teachers and parents/guardians can submit artworks via the RA website until 4 March 2026.

---

### Important dates

**5 January–4 March 2026**

Registration and submission open

**May 2026**

Judging

**14 July 2026**

Online exhibition opens

**14 July–30 August 2026**

Display at the RA open

**RA** Royal Academy of Arts

**Sign up and find out more**

[roy.ac/youngartists](https://roy.ac/youngartists)

[@royalacademyarts](https://twitter.com/royalacademyarts)

Made possible by Robin Hambro



## Spring Term

# The Essex SEND Local Offer Roadshows

Are you a parent or carer of a young person with special educational needs and disabilities (SEND) aged 0 to 25? Do you want to know what support is available in your area? Come along to one of our Essex SEND Local Offer Roadshows.

You can chat with teams from Education, Health and Social Care, as well as local support groups and activity providers.



The marketplace is free and there is no need to book. Children are welcome!



Drop in between 9:30am and 12:30pm



This term we are in Chelmsford, Harlow, Colchester and Basildon

Scan the QR Code for all the information, including dates and venues or visit the Essex Local Offer at:

<https://send.essex.gov.uk/i-think-my-child-needs-help/essex-local-offer-roadshows>



In Partnership with





# Starting Reception Roadshows



## Is Your Little One Starting Reception in September 2026?

Come along to our Starting Reception Roadshow!

Get ready for a fun, friendly, and totally FREE event designed to help you to support your child feel excited and confident about starting reception.

Essex Early Years has teamed up with local schools plus education, health and care partners to bring you a lively, helpful session packed with top tips and advice.

### Want to join in?

Ask your child's childminder, preschool, or nursery for details about your nearest event, or visit the Essex Talk, Listen and Cuddle website to find out more about dates and times across Essex.

### Starting Reception Roadshow near you:

[R A Butler Academy, Saffron Walden, CB11 3DG](#)

Where:

Thursday 19th March 2026

When:

6:00pm until 8:00pm



You can find out information about the event by scanning the QR code or visiting [www.tlc-essex.info](http://www.tlc-essex.info) and searching 'Starting reception'



Follow us on social media to join our Starting Reception Campaign



Instagram Facebook



TESCO



**Friends of  
St Mary's**  
for the children of St Mary's  
Primary School, Saffron Walden  
Charity number: 1046048



SUPPORT US WITH TESCO'S  
**BLUETOKEN**  
SCHEME!



**DROP IN A  
BLUE TOKEN  
FOR FOSM!**

**VOTE FOR US  
IN STORE!**



**Help us raise funds for our school!**



# Diary Dates



## Key Dates for the Spring Term

### February 2026

<b>WHOLE MONTH</b>	-	<b>LGBTQ+ History Month</b>
<b>Monday 16th to Friday 20th February</b>	-	<b>Half Term Holiday</b>
<b>Monday 23rd February</b>	-	<b>Pupils Return from 8.30am</b>
<b>Tuesday 24th February</b>	-	<b>Yr 1 &amp; Yr 2 Saffron Hall Visit</b>
<b>Friday 27th February</b>	-	<b>Yr 4 Public Speaking Competition (Katherine Semar)</b>

### March 2026

<b>Tuesday 3rd March</b>	-	<b>Governors' Day</b>
<b>Thursday 5th March</b>	-	<b>Parent/Carer Book Look/Share Our Work sessions: 8.30am to 9am (NOT Reception) &amp; 3.15pm to 4pm</b>
<b>Thursday 5th March</b>	-	<b>World Book Day—Dolce special lunch</b>
<b>Monday 9th to Friday 13th March</b>	-	<b>British Science Week</b>
<b>Monday 9th to Friday 20th March</b>	-	<b>Assessment weeks</b>
<b>Tuesday 10th March</b>	-	<b>Parent/Carer Consultations from 3.30pm</b>
<b>Thursday 12th March</b>	-	<b>Parent/Carer Consultations from 3.30pm</b>
<b>Monday 16th March</b>	-	<b>World Book Day</b>
<b>Monday 16th to Friday 20th March</b>	-	<b>Neurodiversity Week</b>
<b>Monday 16th March</b>	-	<b>Y4 Parent presentations 9.00am (School Hall)</b>
<b>Tuesday 17th March</b>	-	<b>CHANGE OF DATE - Y5 &amp; Cheer Squad Dance Show at Saffron Hall 4.15pm—6.00pm</b>
<b>Wednesday 18th March</b>	-	<b>Yrs 5 &amp; 6 Athletics Squad District Finals</b>
<b>Friday 20th March</b>	-	<b>Red Nose Day</b>
<b>Monday 23rd March</b>	-	<b>Y2 Duxford Trip</b>
<b>Tuesday 24th March</b>	-	<b>School Choir workshop at SWCHS</b>
<b>Thursday 26th March</b>	-	<b>Y3 Parent Presentation 9.15am (School Hall)</b>
<b>Friday 27th March</b>	-	<b>Easter Service @ St Mary's Church (11am)</b>
<b>Friday 27th March</b>	-	<b>Last day of term – finish at 1.30pm</b>
<b>Monday 30th March - Friday 10th April -</b>		<b>Easter Holidays</b>

