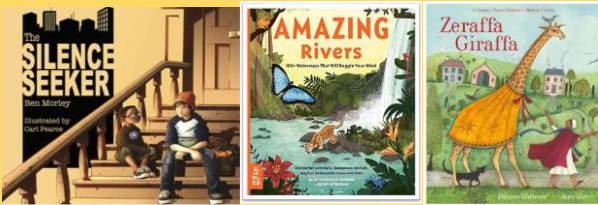


## ENGLISH –

Story Writing, Information Text,  
Persuasive Writing, Creative Writing

### READING FOCUS



## ENRICHMENT

Create your own settlement – who would live there?  
What amenities would you have?

Visit the Natural History Museum in London

Visit the library and borrow some books about the  
Stone, Bronze and Iron Age or The Romans.

## PSHCE

Anti-bulling

E-Safety

Economic Wellbeing

Myself and my relationships

## P.E + Sports Day

Indoor Athletics

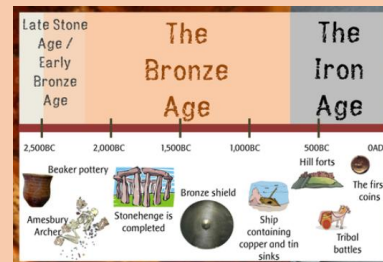
Rounders

## MUSIC – RECORDERS

Charanga – listen,  
compose, perform

## SUMMER TERM (Year 3)

### Settlements



## RE

When Jesus left what was  
the impact of Pentecost?

What difference does  
being a Muslim make to  
daily life?

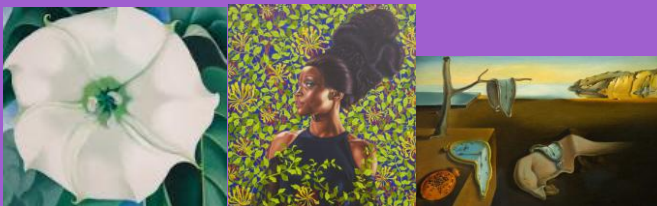
## FRENCH



*Days of the Week*

*Food & Restaurants*

ART/DT – Artist Study – painting, mixed media,  
collage, sketching



DESIGN & TECHNOLOGY – product research,  
design, make, test and evaluate



## HISTORY

British History – Would you prefer to live in the  
Stone Age, Iron Age or Bronze Age?

British history – Why did the Romans settle in  
Britain?

## GEOGRAPHY

Are all settlements the same?

## SCIENCE – PLANTS / ANIMALS INC. HUMANS

- Identify that animals, including humans, need the right types and amount of nutrition
- Identify that humans and some other animals have skeletons and muscles for support, protection and movement
- Identify and describe the functions of different parts of flowering plants: roots, stem/trunk, leaves and flowers
- Explore and describe the requirements of plants for life