

St Mary's Newsletter

Attendance Weekly 96.5%

Attendance Year 96.7%

Spring Term – Friday 8th November 2024

Telephone 01799 523384

Email: info@st-maryscofe.essex.sch.uk

Website: www.stmaryssw.org.uk



Our motto: Let Your Light Shine... as You Grow inspired by Matthew 5: 15-16

Compassion

Friendship

Perseverance

Respect

Trust

Truthfulness

Dear parents, carers and friends of the school,

Welcome back to St Mary's. I hope you all had a great half term and feel refreshed and ready to tackle the final half term as we head towards Christmas. With the first week over, it has already been an extremely busy one. Please read on to find out some important news and updates and don't forget to check out our Class Updates where you will find what our pupils have been up to in class and around school this week!

Worship Council

Congratulations to: Maddison, Kobe-Wayne, Oliver, Ela, Freddy, Brogan-Grace, Layla-Mae, Harry, Kathryn, Woody and Isla who are our new Worship Council members. On Tuesday these fantastic role models were awarded with their special Worship Council badges, which were presented in assembly by Reverend Jeremy Trew and myself. The children were understandably very proud to receive their badges and remembered to shake our hands, (with the correct hand) and say thank you, whilst giving us eye contact! Very impressive!



Grow10 Update:

Thank you all for your patience whilst the GoodHub Grow10 payments system has been 'offline', which started during the latter part of the half term break. I am delighted to report that the payments system is now back online and collecting donations as normal! Due to this delay, I have now decided to **extend the Grow10 fundraising deadline until 5pm on Wednesday the 11th of December**, to allow all pupils to have completed their fundraising challenges.

We have now sailed through our target of **£2,100** (for new computing equipment and a hall sound system) **with our current total standing at £2,411.38** (which is 114% of our original target!) Now, let's see how much we can raise in the remaining time, **as we still have 34 days to go!**

Once again, thank you so much for all of your hard work in supporting our fantastic pupils in their fundraising initiatives. Please remember to share photos with the school by emailing these into the school office on info@st-maryscofe.essex.sch.uk along with a few lines of text telling us what they have been up to. We will also add these to the Grow10 display board in school.

So... let's find out some more about what some of our pupils have been up to more recently on their Grow10 initiatives:

Kaan (in Caterpillar Class) has been taking on an exciting skipping challenge. Over 15 days, his goal is to complete 3000 skips! Kaan has raised an amazing £190, massively helping his class total!

Beatrice (in BusyBee Class) has chosen to sell some of her Lego. She has weighed multiple sets of Lego pieces, helped to list it online and then packaged and dispatched it once it was sold. So far she has sold five sets and raised almost £30. Beatrice has more listings which she hopes will sell and plans to weigh out more bags of Lego.

Mabel (in Caterpillar Class) has also been selling lego. Mabel (with the help of her mummy) sold Lego from the school playground on Wednesday this week and it was a roaring success. I can't wait to find out what she has raised!

Mario (from Butterfly Class) has made some delicious cakes and has raised £35. Very well done Mario!

Next week I will give you an update of how each of our classes are doing, including which class is in the lead and a running total of each child's fundraising totals so far! Very exciting!



Eco Garden & Front-Beds Make-over

I would like to say a **HUGE** thank you to Tom and Sophia Seal (mum and dad of Florence in Ladybird Class), Mrs McInnes (our Forest School and Eco-Garden Lead and Sustainability Champion), Ms Marks (along with her daughters Pippa and Lottie both at St Mary's), as well as Annabel (from Cultivating Change) who thoughtfully came into school during the half term break to clear and tidy up our Eco Garden zone. All seven of us cleared and dug over the seven Eco Garden beds which were chock full of weeds, whilst Tom and Sophia also dug over and relocated plants at the front of school and very kindly purchased and donated some new bedding plants which they then added to our front sleeper beds. We even added some compost to a few of the Eco Garden beds, which had previously been donated by Mr Bryne. I am sure you will agree that the transformation has been simply fantastic! Later in the year, when the weather improves and frosts have past, each class will plant some seeds in their own Eco-Garden bed. They will then cultivate their produce as the seasons progress and harvest what they have grown, which will then be utilised in school. Another very exciting project for our pupils here at St Mary's.



Stars of the Week

Well done to our Shining Stars of the Week, who were presented with their certificates at the end of our Remembrance Service today.

Ernie: for pushing himself with his writing

Charlie C: for his reading progress and reading above his banding level

Christianus— for his good effort and participation in PSHCE!

Bobbie: good effort in all subjects!

Ruby: for super work in her maths this week!

Oscar: for his fantastic attitude to learning and always being willing to give everything another go.

Ela: for always displaying Safe, Respect, Effort.

Kayden: for always using his manners and showing respect.

Elsie: for her excellent reading and comprehension.

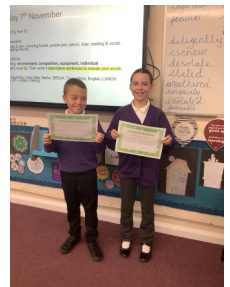
Kobe-Wayne: for his fantastic participation in English

Hattie: Excellent sentence work in English.

Charlie T: Working hard in all subjects.

Femi: joining in with all of our reception activities and making lots of effort in everything she does.

Alfie: for trying really hard in reception.



Moments Matter—Attendance Counts

Improving school attendance is everyone's business, and back in January 2024, the Department for Education launched an attendance campaign to support this challenge, "Moments Matter, Attendance Counts".

One of the key points of that campaign is:

Regular attendance to school is important for more than just attainment:

Attending school regularly (attendance above 90%) can facilitate positive peer relationships, which is a protective factor for mental health and wellbeing.

We know and appreciate that a small number of children face greater barriers to attendance, such as those with long term medical needs or special educational needs and disabilities and we will continue to work with these individual children and families to overcome these barriers.

As a school we have a legal duty to monitor and act on low attendance and poor punctuality. The school attendance team meets fortnightly to review attendance and at times may invite parents / carers to attendance meetings. These meetings help us to better understand the barriers to attendance for the child and the family and help with making an individualised plan to improve attendance and get the right support in place.

As we approach the in winter months we know that that children are more susceptible to illness, including coughs and colds. Please see the **what to do, advice on childhood illness** form regarding when to send your child to school. If you are worried or have a concern about your child's attendance, please speak to the office to arrange a meeting with the schools Attendance Team.



School Crossing Patrol—IMPORTANT message from Essex County Council



Unfortunately, our School Crossing Patrol Ged Pearce is unable to work on Monday morning (11th November). Ged hopes to be available to cover the afternoon session, but this is not certain unfortunately. We will advise you further if we are able to.

We have no cover available, and therefore the crossing will be vacant in Ged's absence.

Please could parents/carers make alternative arrangements for any unaccompanied children.

Thank you for your support with this.

Kind regards

School Crossing Patrol Service
Essex County Council

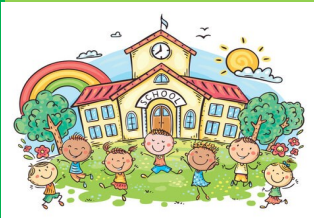
Have a great weekend.

Warm regards

Mr C. D. Jarman

Headteacher of St Mary's Church of England Primary school, Saffron Walden

Primary School Applications for September 2025
(Children born between 01/09/2020—31/08/2021)



Applications for Reception September 2025 open on **Monday 4th November**.
For all information about applying for a school place and to make an application please visit the Essex County Council website www.essex.gov.uk/admissions.

Closing date is Wednesday 15th January, 2025

School Photos—Carmel Jane Photography—reminder to order photos



Carmel Jane Photography visited our School on the 14th of October 2024, and took the Individual & Sibling Photos.

In order to access your photos you will need to register as below.

Register in 3 easy steps in less than a minute:

1. Head to www.carmeljaneshop.co.uk
2. Enter your unique code : JRJVA9996S
3. Include your child's full school register name



PTA NEWS

We hope you all enjoyed the half-term break! The PTA team recently got together to map out the plans for the events for the school year and we are excited to be running some fun activities over the coming months. This term, to school is already busy with the Grow 10 initiative, so you have not seen as much of us as usual, but we have loved seeing all the creative fundraising ideas the children have had so far. Brilliant!

This half-term, we will be a bit more present though, as many PTA-funded activities will take place. The **in-school panto** will take place on **Wednesday 4th December**, and the **Christmas tree and crackers** for the Christmas lunch are all things the PTA funds for the school. We are delighted to be holding an **end-of-term disco** for KS2 on the **Friday 6th December** (details below) and we will also be running another **Word Parade** (date TBD) before the end of the year.

If you are not yet using Classlist, please sign up so we can contact you directly with event info and ticket sales. Use this link to register: <https://classlist.page.link/otMiWqqKJzJYMjVA6>



Finally, we have heard from several parents/carers that you'd like to get involved in the PTA. Please get in touch either through Classlist or via email at pta@st-maryscofe@essex.sch.uk

KS2 Disco—Friday 6th December

Tickets for the school disco on 6th December (17:00 - 18:30) are now available on Classlist:

https://app.classlist.com/parent/#/events/view/1190990678?s=859640953&utm_source=SCHOOL&utm_medium=SHARED_LINK

Tickets cost £5 per child, which helps us pay for the crisps/soft drinks we provide to each child. As always, we will have sweets, stickers and tattoos on sale, so please send your children along with pocket money (coins preferred!). If you would prefer them not to purchase items, please let us know using the Q&A section when purchasing your ticket. **Can you help?** We are looking for 3 - 4 adult helpers at the disco. Please let us know if you can come along to help out (refreshments, selling sweets, etc.). Contact us here or at pta@st-maryscofe@essex.sch.uk



Parent/Carers Consultations—Tuesday 12th November and Thursday 14th November

Appointments can be booked from **Tuesday 5th November** for the parent consultations via our Parent's Evening System which can be found at <https://stmarys.schoolcloud.co.uk/>.

The booking system closes on Monday 11th November at 12.00pm.


In order to log on securely parents/carers will need to put in their name as given to the school, your child's given name (or chosen first name as given to the office) and your child's date of birth as an 8 digit number e.g. 25/09/2008.

Please use the link below to login into the Parents Evening System to book your appointment. <https://stmarys.schoolcloud.co.uk/>

Please arrive promptly for your meeting. The meetings will be face to face and held in the main school hall from 3.30pm - 6.30pm, with each family having the opportunity to make a 10 minute appointment per child.

Please note: parents who have already had a One Plan Meeting will not be offered a separate parent consultation meeting.

If you need any assistance with booking your appointment, please contact the school office.



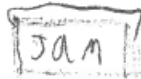
Matthew's Teddy Tombola

Prize every time! Try your luck to win a
new furry friend.

One ticket: 50p | Two tickets: £1 |
Six tickets: £2



After school on November 18



Jasper's Jumble (festive style!)



Bring the joy! Come to buy some pre-
loved and special festive treats,
including Christmas jam and Christmas
Wish Catchers!

All items 50p



After school on November 18



MILLIE'S
AND LILI'S
SWEET STALL
22ND
NOVEMBER

lollipop



SWEET BAGS
FOR £1.50
LOLLIPOPS
FOR 20P



Sweet



What to do

Advice on childhood illnesses



Go to school; if needed, get treatment as required



Some restrictions for school attendance



Don't go to school and see the GP

What it's called?	What it's like	Going to school	Getting treatment	More advice
Asthma flare up	Worsening of usual symptoms		Follow your care plan	Stay off school if feeling too unwell
Chicken pox	Rash begins as small, red, flat spots that develop into itchy fluid-filled blisters		Pharmacy	Back to school five days after on-set of the rash, or when all lesions are crusted over
Common cold	Runny nose, sneezing, sore throat		Pharmacy	Ensure good hand hygiene
Conjunctivitis	Teary, red, itchy, painful eye(s)		Pharmacy	Try not to touch eye to avoid spreading*
Flu	Fever, cough, sneezing, runny nose, headache body aches and pain, exhaustion, sore throat		Pharmacy	Ensure good hand hygiene*
German measles/ Rubella	Fever, tiredness. Raised, red, rash that starts on the face and spreads downwards		GP	Back to school four days after the rash has started, if feeling well enough. Please let the school know, as pregnant members of staff may be affected.
Glandular fever	High temperature, swollen glands, sore throat; usually more painful than any before		GP	*
Hand, foot & mouth disease	Fever, sore throat, headache, small painful blisters inside the mouth on tongue and gums (may appear on hands and feet)		GP	Attend school while monitoring symptoms
Head lice	Itchy scalp (may be worse at night)		Pharmacy	
Impetigo	Clusters of red bumps or blisters surrounded by area of redness		GP	Back to school when lesions crust or 48 hours after start of antibiotics
Measles	Fever, cough, runny nose, watery inflamed eyes, rash		GP	Back to school four days from on-set of rash, and if feeling well enough
Ringworm	Red ring shaped rash, may be itchy, rash may be dry and scaly or wet and crusty		Pharmacy	
Scabies	Itching rash, commonly between fingers, wrists, elbows, arm		GP	Back to school after first treatment
Scarlet fever	Fever, unwell, red tongue, sandpaper rash		GP	Exclusion period during first 24 hours of antibiotics*
Shingles	Pain, itching, or tingling along the affected nerve pathway. Blister-type rash		GP	Only stay off school if rash is weeping and cannot be covered
Sickness bug/ diarrhoea	Stomach cramps, nausea, vomiting and diarrhoea		Pharmacy	Contact GP if symptoms persist after 48 hours
Threadworms	Intense itchiness around anus		Pharmacy	Ensure good hand hygiene
Tonsillitis/ Strep throat	Intense sore throat for more than 1 day		Pharmacy	See GP if temperature lasts more than 48 hours or cannot swallow. Only need to stay off school if feeling too unwell
Whooping cough	Violent coughing, with a 'whoop'		GP	Exclusion period during first five days of antibiotics
Covid				Visit www.nhs.uk for latest guidance

*Attend school while monitoring symptoms.

This information is a guide and has been checked by health professionals. If you are unsure about your child's wellbeing, we recommend you contact your pharmacy or GP to check.

Working in partnership with

Should my child go to school/nursery today?

Hertfordshire and West Essex Healthier Together for further information

<https://www.hwehealthiertogether.nhs.uk/parents/carers>





Saffron Walden Christmas 2024

Brought to you by Saffron Walden Town Council

NOVEMBER

Saturday 09 & 16, 10am - 2pm
Lantern Making Workshops
Jubilee Hub

Friday 22

5.30pm, Lantern Parade
leaving from St Mary's Church

6pm, Light Switch On

Market Place
with food and entertainment,
4pm - 8pm

Sunday 24, 10am - 3pm

Christmas Fayre in the Square
Market Place

Christmas Gift Fair in The Town Hall

In aid of Mayor's Charities

November

Friday 22 - Tuesday 26

December

Friday 06 - Tuesday 10

DECEMBER

Sat 07 & Sun 08, 11am - 3pm,
Santa's Grotto
The Town Hall (via back door),
£2 per child

Sunday 08, 10am - 3pm

Christmas Market
Market Place

Friday 13, 1pm - 2pm

Christmas Carols at the Memory Tree
Market Place

Saturday 21, 10am - 12 noon

Christmas Pop-up Cinema

ARTHUR CHRISTMAS

The Town Hall

In aid of Mayor's Charities
Chargeable; tickets available from
Tourist Information Centre



visitsaffronwalden.gov.uk/events/
01799 524002 - Tourist Information Centre
events@saffronwalden.gov.uk

Intercounty

McCARTHY STONE

Life, well lived





Diary Dates



Key Dates for the Autumn Term 2024:

Monday 4th November	- INSET training day for staff members
	- Online applications open for Reception 2025
Tuesday 5th November (8.30am)	- Pupils back to school (from 8.30am)
Wednesday 6th November	- Grow10 Lego and MEGA Blok Sale—3.15pm
	- Grow10 Bracelet and Scrunchie Sale—3.15pm
Thursday 7th November	- Parent/Carer book look 8.30—9.00 and 3.15—4.00
Friday 8th November	- Remembrance Service at St Mary's Church 11.00am
	- Years 5 & 6 Inter-house Tag Rugby Competition
	- Grow10 Board Game Shop—3.15pm
Monday 11th November	- Grow10 Tattoo Stall—3.15pm
	- Grow10 Pokemon Card/Rice Crispy Treat Sale
Tuesday 12th November	- Parent/Carer Consultations (School Hall) 3.15pm-6.00pm
Thursday 14th November	- Parent/Carer Consultations (School Hall) 3.15pm-6.00pm
Friday 15th November	- Grow10 Bake Sale—3.15pm
Monday 18th November	- Reception 2025 Open Morning 9.30—11.30
	- Grow10 Teddy Tombola/Toy Store—3.15pm
Friday 22nd November	- Grow10 Sweet Sale—3.15pm
Tuesday 26th November	- Reception 2025 Open Morning 9.30—11.30
Friday 29th November	- Grow10 Christmas Decoration Sale—3.15pm
Wednesday 4th December	- PTA Pantomime
	- Grow10 Reindeer Food and Play Dough Sale—3.15pm
Friday 6th December	- Christmas Jumper Day
Friday 6th December	- PTA KS2 Disco 5.00pm—6.30pm
Tuesday 10th December	- EYFS & KS1 Nativity at St Mary's Church 6.00pm - 7.00pm
Thursday 12th December	- Flu Immunisation
Wednesday 16th December	- Christmas lunch
Thursday 19th December	- Carol service at St Mary's Church 9.30am—10.30am
Friday 20th December	- Last day of term—1.30pm
Wednesday 15th January	- Closing date for Reception 2025 applications

Please note all new or changed dates are in blue

