

St Mary's Newsletter

Spring Term – Friday 15th November 2024

Telephone 01799 523384

Email: info@st-maryscofe.essex.sch.uk

Website: www.stmaryssw.org.uk

Attendance Weekly 95.4%

Attendance Year 95.6%



Our motto: Let Your Light Shine... as You Grow inspired by Matthew 5: 15-16

Compassion

Friendship

Perseverance

Respect

Trust

Truthfulness

Dear parents, carers and friends of the school,

Welcome to this week's newsletter. This week I am going to share some more of our Grow10 fundraising exploits, including an update on how each of our classes are doing, in the overall fundraising competition. Don't forget to check out our Diary Dates (on the last page of this newsletter) as there are lots of important things still to come in the remaining 5 weeks of this Autumn/Winter term, including lots of pupil-led fundraisers—including cake sales, toy sales and craft sales! Very exciting! Also don't forget to read our Class Updates (sent separately to this document), where you can find out what our pupils have been up to in class throughout this week!

GROW 10!

A **massive** St Mary's shout-out to the following children who are finely honing their entrepreneurial skills by doing the following fundraising activities:

Phoebe: making and selling bookmarks

Maisie: challenging herself to swim 100 metres, running a stall and odd jobs

Elijah: making and selling minion cakes

Chloe: making and selling cakes

Quentin and Isobel: selling tattoos

I am delighted to report that we have now bull-dozed through our target of £2,100, with our current total standing at £2,964 (which is 125% of our original target of £2100!) Now, lets see how much we can raise in the remaining time, as we still have 26 days to go! As you will know, our aim this academic year is to raise £6000 for new computing equipment, as well as a sound system for the school hall, so the more we can raise this term—the better!

Quick reminder: don't forget to **tick Gift Aid** to ensure even more of your fundraising money goes to the school and that you **enter your child on their class page** so that their fundraising goes towards their class' total—on the fundraising leader board. Don't worry if you have already signed up your child and they aren't linked to their class page—we will continue to keep a running total on our excel spreadsheet to ensure each class' total is accurate. If you would like to find your child's class fundraising page these are saved on the school website. Please click this link <https://www.stmaryssw.org.uk/school-fundraising/> to go straight to the 7 different class fundraising pages. Good luck! Remember: the closing date for the Grow10 fundraiser is now 11th December —so 3 and a half weeks to go!

Class Grow 10 Trophy Competition:

1st place: Year 2 with 1,330.76

2nd place: Year 3 with £628.56

3rd place: Year 6 with £508.13

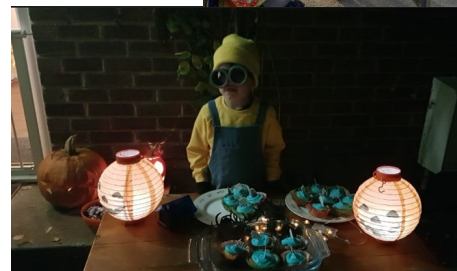
4th place: Year 4 with £464.25

5th place: Year 1 with £346.00

6th place: Year 5 with 277.05

7th place: Reception with £148.00

As you will know each class' target was to raise £300—so 5 of our classes have already achieved this—with one class doubling this amount and another class raising over four times the target—so far! Wow! In next week's newsletter I will continue to keep you updated with other fundraising examples and what we have raised so far. If you would like us to share a photograph of your child, along with a brief description of their fundraising initiative and what they have raised so far, then please email this to the school office on info@st-maryscofe.essex.sch.uk Keep up the great work everyone!



House triumphs!

As we start the new half term House points, these are the results for this week: In 1st place with 128 points was Earth House (green); in 2nd place with 102 points was Fire House (red); in 3rd place with 85 points was Air House (yellow) and in 4th place with 81 points was Water House (blue). Well done everybody!



**1st place
(128 points)**



**2nd place
(102 points)**



**3rd place
(85 points)**



**4th place
(81 points)**

Stars of the Week

Emily - for showing compassion by making sure no-one is excluded at break times.

Dillon - for his focus and effort towards his school work and perseverance when finding work challenging.

Sofia - for always showing safe, respect and effort.

Archie - for always helping his peers.

Mia - for amazing creativity and effort in writing.

Kathryn - for a positive attitude towards her learning.

Vivien— for her hard work in our new maths unit

Shayne—for beautiful presentation and effort

Hugo – for very confident speaking in church.

Woody - for outstanding effort in all areas of his learning.

Ozan - for always pushing himself, even outside the classroom in his own self-study

Micky - effort and perseverance in completing medium and spicy tasks in maths



Do have a lovely weekend.

Kind regards

Have a great weekend.

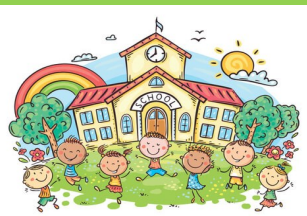
Warm regards

Mr C. D. Jarmain

Headteacher of St Mary's Church of England Primary school, Saffron Walden

Primary School Applications for September 2025

(Children born between 01/09/2020—31/08/2021)



Applications for Reception September 2025 open on **Monday 4th November**.

For all information about applying for a school place and to make an application please visit the Essex County Council website www.essex.gov.uk/admissions.

Closing date is Wednesday 15th January, 2025



We all want to stay warm this winter, but there's an uncomfortable truth you need to know.

Wood burning harms your...

Wallet

Wood burning is almost always more expensive than other forms of heating

Health

Wood burning is a major source of harmful small particle air pollution that can damage your lungs, heart and brain

Planet

Wood burning produces more carbon emissions than oil or gas for the same amount of heat or energy

Visit cleanairhub.org.uk or scan the code now to learn the facts



Matthew's Teddy Tombola

50p gets you two tickets!

Prize every time!

Try your luck to win a new furry friend!

After school on November 18

Jasper's Jumble (festive style!)

Bring the joy! Come to buy some pre-loved and special festive treats, including Christmas jam and Christmas Wish Catchers!

All items £2 or under

After school on November 18



Blossom & Isla's butterfly cupcakes

for **£1** Each

Tuesday 19th November—3.15pm





DREAM BIG



MILLIE'S AND LILI'S SWEET STALL 22ND NOVEMBER

lollipop

**SWEET BAGS
FOR £1.50
LOLLIPOPS
FOR 20P**

Sweet





Saffron Walden Christmas 2024

Brought to you by Saffron Walden Town Council

NOVEMBER

Saturday 09 & 16, 10am - 2pm
Lantern Making Workshops
Jubilee Hub

Friday 22

5.30pm, Lantern Parade
leaving from St Mary's Church

6pm, Light Switch On

Market Place
with food and entertainment,
4pm - 8pm

Sunday 24, 10am - 3pm

Christmas Fayre in the Square
Market Place

Christmas Gift Fair in The Town Hall

In aid of Mayor's Charities

November

Friday 22 - Tuesday 26

December

Friday 06 - Tuesday 10

DECEMBER

Sat 07 & Sun 08, 11am - 3pm,
Santa's Grotto
The Town Hall (via back door),
£2 per child

Sunday 08, 10am - 3pm

Christmas Market
Market Place

Friday 13, 1pm - 2pm

Christmas Carols at the Memory Tree
Market Place

Saturday 21, 10am - 12 noon

Christmas Pop-up Cinema

ARTHUR CHRISTMAS

The Town Hall

In aid of Mayor's Charities
Chargeable; tickets available from
Tourist Information Centre



visitsaffronwalden.gov.uk/events/
01799 524002 - Tourist Information Centre
events@saffronwalden.gov.uk

Intercounty

McCARTHY STONE
Life, well lived





Diary Dates



Key Dates for the Autumn Term 2024:

Monday 11th November	- Grow10 Tattoo Stall—3.15pm
	- Grow10 Pokemon Card/Rice Crispy Treat Sale
Tuesday 12th November	- Parent/Carer Consultations (School Hall) 3.15pm-6.00pm
Thursday 14th November	- Parent/Carer Consultations (School Hall) 3.15pm-6.00pm
Friday 15th November	- Grow10 Bake Sale—3.15pm
Monday 18th November	- Reception 2025 Open Morning 9.30—11.30
	- Grow10 Teddy Tombola/Toy Store—3.15pm
Tuesday 19th November	- Grow10 Cupcake sale—3.15pm
Thursday 21st November	- Grown10 Bracelets/sweets/raffle 3.15pm
Friday 22nd November	- Grow10 Sweet Sale—3.15pm
Tuesday 26th November	- Reception 2025 Open Morning 9.30—11.30
Friday 29th November	- Star Radio in to record a Christmas song—9am
Friday 29th November	- Grow10 Christmas Decoration Sale—3.15pm
Wednesday 4th December	- PTA Pantomime
	- Grow10 Reindeer Food and Play Dough Sale—3.15pm
Friday 6th December	- Christmas Jumper Day
Friday 6th December	- PTA KS2 Disco 5.00pm—6.30pm
Tuesday 10th December	- EYFS & KS1 Nativity at St Mary's Church 6.00pm - 7.00pm
Thursday 12th December	- Flu Immunisation
Wednesday 16th December	- Christmas lunch
Thursday 19th December	- Carol service at St Mary's Church 9.30am—10.30am
Friday 20th December	- Last day of term—1.30pm
Wednesday 15th January	- Closing date for Reception 2025 applications

Please note all new or changed dates are in blue

