

St Mary's Newsletter

Spring Term – Friday 8th September 2023

Telephone 01799 523384

Email: info@st-maryscofe.essex.sch.uk

Website: www.stmaryssw.org.uk

Attendance Weekly 96.4%

Attendance Year 96.4%



Our motto: Let Your Light Shine... as You Grow Matthew 5: 15-16

Friendship

Trust

Truthfulness

Compassion

Perseverance

Respect

Dear parents, carers and friends of the school,

A Warm Welcome Back!

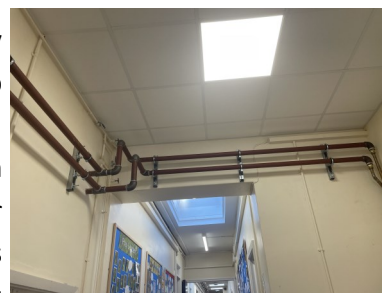
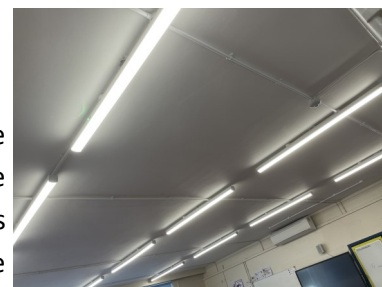
The new academic year has started off really calmly here at St Mary's and I am impressed with how well the children have settled into their new classes; once again I would like to say a big thank you to everyone involved for helping to create such a peaceful and positive start to the new school year. It has also been an unusually warm start to the Autumn term—and I noticed in the news that it was, remarkably, the hottest day of the year yesterday (Thursday!) Where was this weather during July and August, I hear you ask? Whilst the weather continues to be warm please remember to send your child in with a cap, apply sun cream at home and keep sending that all important water bottle in (with their name clearly labelled on the outside). Thank you for your support in this matter.

Exciting Developments

In this week's newsletter I would like to share some of the exciting developments (along with some photos that I have taken) which have been taking place here at St Mary's throughout the 6 weeks Summer closure period. As you will be aware, as our pupils and their families were leaving the school gates at the very end of the Summer term, the builders were beginning to arrive on the school site, along with their plant machinery, tools as well as a HUGE amount of materials.

There has been nearly £700,000 of work completed so far on the school site, which includes the fitting of three new energy efficient Air Source Heat Pumps (and removal of our old gas boilers), new radiators and pipes throughout the interior of the school (and removal of our old ones), new LED energy efficient lighting throughout—with automatic PIR sensors to switch them on and off when they are not being used, and brand new ceilings and insulation in the 5 classrooms which share the old Victorian pitched school roof (in Reception, Year 1, year 2, Year 3, Year 6 classrooms). In all of our school toilets we have now installed new hand dryers which are... you

guessed it... energy efficient and will help us to drastically reduce the amount of blue paper towels which get thrown away in our school bins each week. Finally, In the next few weeks we are also due to have solar panels fitted to the school roof—which will also help us with our energy efficiency drive!



At the rear of the school, you will have undoubtedly noticed the vast amount of works going on to create our two new multi-use learning rooms.

Both new buildings are rapidly on their way to completion and will add a new spacious school library, toilets, a variety of intervention areas, SEN spaces, a new Inclusion Office and a parents/carers workshop space. I am sure you will also have seen the new car park which is located at the corner of the field, as you enter through the Caton's Lane entrance.

The interior works to the school are now 95% completed with a few final tasks to be completed to get the new heating system up and running; the exterior works are ongoing and we hope that these will be completed by the October half term holiday period.



Exciting times, I am sure you will agree!

Thank you for all of your patience whilst all of these works are ongoing. The school and PTA will continue to carry out fundraising activities throughout the year to support these new initiatives, including for furniture, decoration



and other educational resources. Watch this space!

Please feel free to come and speak to me on the school gates to say hello, especially if you are a new face to the school; I will be happy to answer any questions that you may have!

Thank you once again for such a positive start to the term. I look forward to meeting you all as the year progresses.

Kind regards

Mr C. D. Jarman

Headteacher of St Mary's Church of England Primary school, Saffron Walden

School Policy about Jewellery at School

Please can we remind Parents/Carers of our policy about wearing jewellery at St Mary's

- No jewellery other than an analogue or digital watch
- A Smartwatch of any variety must **NOT** be worn at school.
- One set of plain stud earrings in each earlobe is acceptable.

For health and safety reasons earrings are to be removed prior to PE/sport. If your child is unable to remove their own earrings they should not be worn to school on that day. In view of this, if your child is having their ears pierced, this should only be done at the beginning of the summer holidays allowing enough time for the earrings to be taken out by September. It is your child's responsibility to keep their property safe.

School Dinners with Dolce



The new dinner system is up and running. Thank you to all parents/carers to have helped with the smooth transition to this new system by pre-ordering school dinners. Please remember to continue to do this. You must also remember that if you do pre-order a lunch and your child is then not in school (due to illness, appointment etc) you must cancel the order by 8.55 or you/or the school will still be charged.

Please can all parents/carers inform the school office immediately if there are any changes to food related allergies/intolerance or special requirements. We will discuss the updated requirements with you and then the school will then update your child's school grid account.

**GATE CLOSED
PLEASE USE
MAIN ENTRANCE**

While up and coming building work continues at the school, the Catons Lane gate will be closed for health and safety reasons. Therefore, Parents and Carers must **NOT** come into school via the new carpark. All gates from the meadow to the playground will now be closed until further notice.

Access to the school will be via the Castle Street playground entrance only.

Please accept our apologies for any inconvenience that may be caused by this closure.



COMMUNITY SCHOOL NURSE DROP IN SESSIONS

Drop in sessions held once a month around the Uttlesford District, support and advice offered by a School Nurse and the 5-19 Healthy Family Support Practitioner.

Parents can ask advice about behaviour and emotional needs, bed wetting and soiling issues plus other health needs that may be impacting on both home and school life.



12th September 2023

Saffron Walden Hospital Clinic Room

15.30 _ 17.00hrs





Diary Dates



Key Dates for the Autumn Term 2023:

- | | | |
|------------------------------------|---|---|
| Monday 4th & Tuesday 5th September | - | St Mary's INSET Days (for school staff) |
| Wednesday 6th September | - | All pupils return to St Mary's at 8.30am for the start of the new academic year |
| Monday 11th September | - | Air Quality Awareness—parent surveys and Years 5/6 workshop |
| Friday 15th September | - | First day for Year 5 Swimming—check website for all dates |
| Tuesday 19th September | - | Parent/Carer Workshops—Phonics and Independence (9.00am and 6.00pm) |
| Tuesday 26th September | - | Harvest Service at St Mary's Church (2pm) |
| Thursday 12th October | - | Kittle Photographic - Individual and Sibling photos |
| 23rd—27th October | - | HALF TERM BREAK |
| Tuesday 31st October | - | Light Day—children can wear bright/light clothes |
| Friday 10th November | - | Remembrance Day assembly/service at St Mary's |
| Wednesday 15th November | - | Governors Day |
| Thursday 16th November | - | Reception 2024 Open Morning (9.30—11.00) |
| Monday 20th November | - | Reception 2024 Open Morning (9.30—11.00) |
| Thursday 23rd November | - | Flu vaccines (delivered by NHS Immunisation Team) |
| Wednesday 20th December | - | 1.30pm—school breaks up for the Christmas holiday |
| 21st December—5th January | - | Christmas holiday closure period |
| Monday 8th January | - | Pupils return to school for the Spring term |

** new or amended items added are in blue*

