

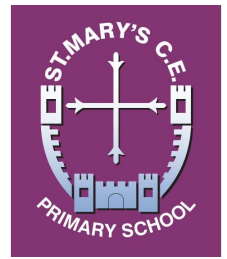
St Mary's Newsletter

Spring Term – Friday 16th May 2025

Telephone 01799 523384

Email: info@st-maryscofe.essex.sch.uk

Website: www.stmaryssw.org.uk



Attendance Weekly 95.3%
Attendance Year 94.8%

Our motto: Let Your Light Shine... as You Grow inspired by Matthew 5: 15-16

Compassion

Friendship

Perseverance

Respect

Trust

Truthfulness

Dear parents, carers and friends of the school,

Thanks

It was great to welcome back our Year 5 pupils after their 3-day residential visit to Danbury and I am delighted to hear that they had a great time and that their behaviour was fantastic. I have been informed that they worked as a team, developed their problem-solving skills and each day pushed themselves out of their comfort zones. Now they are back at school and I have really enjoyed hearing about their favourite activities, and although they are clearly extremely tired (and will need this upcoming weekend to catch up on their sleep) they obviously had an amazing time and made lots of life-long memories. Thanks also for the lovely messages from parents and carers—these have been passed onto the class team. I would like to extend my thanks again to Mrs Potter, Mrs Flack, Mr Pike and Mrs Burgess for accompanying these pupils on their residential trip and supporting them so well throughout their activities and helping them to settle each night. Thanks also to Mrs Smith for teaching Year 3 so fantastically while Mr Pike was away. Well done everyone for such a successful trip!



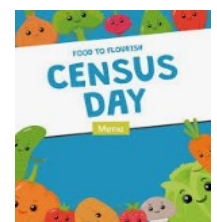
Year 6 SATs

I would also like to extend my thanks to the Year 6 community for how well they have done this week during the Year 6 SATs. The pupils have taken on the various assessment challenges with aplomb, maturity and an outstanding attitude - which I am proud to say is typical of this class. The Year 6 staffing team have been brilliantly supportive, starting the day off with a continental SATs breakfast in the hall and a good natter with their friends, followed by Mindfulness and calming routines. I'd also like to say thanks to our staffing team and governors who have come along to support this process as well as helping to invigilate. On Friday they had an end of SATs celebration breakfast. A real team effort led by Mr Clarke and Miss Driscoll.



Census Meal

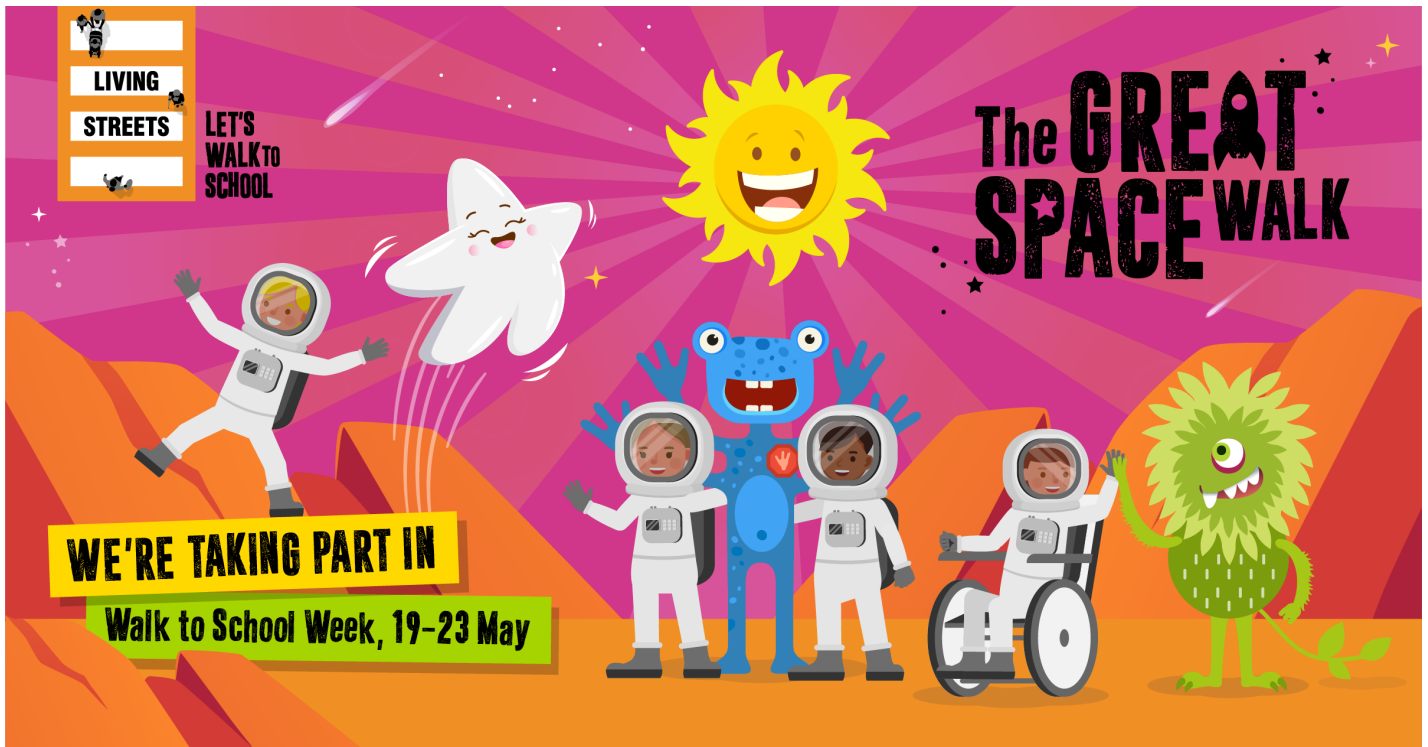
Thank you so much for the parents/carers who signed their children up to eat the special Census Meal on Thursday this week—I spoke to George, our Dolce Kitchen Manager, and he said that there was an extra 30 pupils who had signed up for a delicious school meal today. Thank you so much for your support with this—the additional funding this provides will be extremely beneficial to the school.



Have a great weekend.

Mr C. D. Jarmain

Headteacher of St Mary's Church of England Primary school, Saffron Walden



Our school is taking part in Walk to School Week (19-23 May). The nationwide event is organised by walking charity Living Streets and designed to help pupils experience first-hand the importance of walking to school. Children will be well on their way to reaching their recommended minimum 60 minutes of physical activity per day before even reaching the school gates! Not only will it set them up for a positive day in the classroom, but it will also help create healthy habits for life.

This year's challenge, The Great Space Walk, encourages children to travel actively to school every day of the week. Meeting various colourful intergalactic friends along the way, pupils will learn about the important reasons to walk or wheel and its benefits for individuals, communities and the planet! Each pupil will be challenged to travel sustainably (walk, wheel, scoot, cycle or Park and Stride) to school every day for one week using the wallchart and stickers to log their journeys. Each class will work collectively to make as many active journeys to school as possible across the week. Individual activity diaries, daily stickers and end of week pupil rewards will complement this activity, reinforcing the benefits and keeping children engaged. What do I need to do as a parent/carer? We would ask, if possible, to make arrangements so that your child/children can travel actively to school on week commencing 19 May, helping our school reduce congestion and pollution around the school gates. In return, your child will earn special stickers and a reward trophy! Walking, wheeling, scooting and cycling all count! If you live far away from school and need to drive or take public transport, try parking the car or hopping off the bus/train ten minutes away and walking the rest of the journey.

Thank you in advance for your cooperation.

Unfortunately, Essex County Council do not have any cover available for the crossing patrol on Monday 19th May in the afternoon, and therefore the site will be vacant. Please take extra care when crossing while Mr Shaw is absence, and to make any necessary alternative arrangements for unaccompanied children.



Reminder: Year 6 Krispy Kreme Donut Fundraiser – Friday 23rd May

We'd like to remind parents and carers that the Year 6 Krispy Kreme Donut Fundraiser is taking place immediately after school on Friday, 23rd May.

To ensure everyone gets a delicious treat, a pre-order system is available via the School Money shop. Donuts are priced at £1.50 each, or grab a dozen for £12.00 – perfect for sharing with family and friends.

Please note: All pre-orders must be placed by Monday 19th May to guarantee availability on the day.

Thank you for supporting Year 6.

GRAB A SWEET TREAT!

YEAR 6 DONUT SALE

Friday 23rd May
After school

£1.50
or 12 for £12!

Yummy Krispy Kreme donuts for sale!

Help our very own year 6's to raise money to fund the brilliant send off they deserve!

**Pre-Order by Monday 19th May
via School Money shop**

ST MARY'S
PRIMARY SCHOOL

SUMMER FETE

Saturday 28 June • 10am-1pm

The countdown has begun to the annual St Mary's
Summer Fete!

Join us on the day to explore a fantastic range
of stalls and activities, including:

- Inflatable Assault Course
- Tombolas, including Chocolate, Bottle and Teddy
- Excellent Raffle Prizes to win
- Cake Stall
- Penalty Shootout
- Soak the Teacher!
- Face Painting and Glitter Tattoos
- Ice Creams and Barbecue

Plus many more exciting stalls and
attractions!





Autism
Central

Autism central is here to help!

Sometimes talking to people who share similar experiences to yours means you're more likely to feel understood and get the support you need.

The Autism Central Peer Education Programme is for parents, carers and Personal Assistants of autistic people of any age. They do not need a diagnosis to access the service. Support is provided by parents and carers of autistic people who are happy to share their knowledge and experience with others.

What we can offer:

- A constantly growing range of information and resources is available on the Autism Central website www.autismcentral.org.uk
- Weekly online groups sessions – drop-ins and themed sessions covering a range of topics
- 1:1 support via a telephone or Teams call. This can be requested via the QR code below

www.autismcentral.org.uk

Scan me



Funded by



Delivered by



Essex County Council



Diary Dates



Key Dates for the Spring/Summer Term

Mon 12th— Wed 14th May	-	Year 5 Residential
Mon 12th— Thurs 15th May	-	Year 6 SATs Week
Thursday 15th May	-	Special Census Lunch
Wednesday 21st May	-	Yr4 trip to SWCH Farm
Friday 23rd May	-	Year 6 Krispy Kreme Donut Sale
Friday 23rd May	-	Ascension Day Service at St Mary's Church (9.30am)
	-	Year 6 Krispy Kreme Donut Sale (3.15pm)
Mon 26th— Fri 30th May	-	HALF TERM
Monday 2nd June	-	Pupils return to school at 8.30am
Mon 2nd— Fri 6th June	-	Year 6 Residential
Wednesday 4th June	-	R25 Parent/Carer Information Meeting (9.30am)
Friday 6th June	-	Yr4 catchup swimming session at Lord Butler
Monday 9th - Friday 13th June	-	One Plan Meetings
Wednesday 11th June	-	Yr 1 Linton Zoo Visit
Friday 20th June	-	INSET DAY
Thursday 26th June	-	District Athletics (Carver Barracks)
Friday 27th June	-	SWCHS Transition Day for Year 6
Saturday 28th June (10am-1pm)	-	FOSM Summer Fair
Tuesday 1st July	-	Yr 4 Museum of Zoology Visit
Wednesday 2nd July	-	Sports Day
Monday 7th July	-	Reception Boydells Dairy Farm Visit
Wednesday 9th July	-	Reserve Sports Day
Friday 11th July	-	Reception Celebration Event (9.00am)
Friday 11th July	-	School reports sent out
Friday 11th July	-	KS2 Leavers Disco (5.00-6.30pm School Hall)
Monday 14th July	-	Moving Up Afternoon
	-	Meet the Teacher (3.15pm Years 1&2), (3.30pm Year 3)
Tuesday 15th July	-	Meet the Teacher (3.15pm Years 4&5), (3.30pm Year 6)
	-	Yrs 5&6 Production (6pm School Hall)
Thursday 17th July	-	Yr 6 Leavers Lunch
Tuesday 22nd July	-	End of Year/Leavers Service (9.30am St Mary's Church)
Tuesday 22nd July	-	End of school year - finish at 1.30pm

Please note all new or changed dates are in blue