

Our motto is: 'Let your light shine... as you grow', (inspired by Matthew 5: 15-16)

Our vision is: 'We nurture our pupils to be the best they can be in every way - in an inclusive and supportive environment, rooted in Christian teachings.'



ST MARY'S C.E. (VA) PRIMARY SCHOOL

HANDWRITING POLICY

Aims of Handwriting

Our aim is for pupils to be able to write fluently and with increasing speed, in a range of genres and contexts by the end of Key Stage 2.

To be able to achieve this, St Mary's Primary school teachers will utilise a cursive handwriting approach which has been agreed collaboratively. This will ensure consistency for children from Early Years to Upper Key Stage 2. Examples of the expected letter formations are attached within the appendix.

Curriculum Intent

Our approach is in line with the new National Curriculum 2014.

In Early Years and Year 1, children will:

- Begin to form lower case letters in the correct direction,
- Form capital letters and
- Form digits 0 - 9.

In Year 2, children will:

- Form lower-case letters of the correct size,
- Start to join letters where appropriate to the above requirements and
- Write capital letters and digits of the correct size.

In lower Key Stage 2, children will:

- Know which adjacent letters must be joined and
- Increase the legibility, consistency and quality of their handwriting.

In upper Key Stage 2, children will:

- Write legibly, fluently and with increasing speed.
- Choose the writing implement that is best suited for a task.

Implementation

Handwriting is taught in discrete timetabled sessions, daily in KS1 and at least three times a week in KS2. All handwriting is modelled for the children. In addition, cursive handwriting should be modelled in a range of curriculum areas and when displaying writing.

Key requirements include:

- Capital letters not joining to following letters,
- All lower-case letters to begin with an instroke sitting on the line in KS2 (except x and z). In EYFS and KS1 when children are first learning to form their letters, they are not taught the instroke. This will develop later within KS1 as they begin to write in a cursive style, then develop throughout KS2.

Our motto is: 'Let your light shine... as you grow', (inspired by Matthew 5: 15-16)

Our vision is: 'We nurture our pupils to be the best they can be in every way - in an inclusive and supportive environment, rooted in Christian teachings.'

- To recognise the break letters that do not join to the following letter (f, g, j, q, r, x, z and y) and letters that stand alone (x, z)
- Ensure descenders do not loop to the following letters.

Throughout Years 3, 4 and 5 children work towards earning their Pen Licence, which can be used for specific tasks as directed by the class teacher. In Year 5, the expectation is that most children will write in pen, except for Maths which is always in pencil. Diagrams, tables and lines should also be drawn in pencil.

Impact

Our handwriting curriculum enables all children to have developed a legible and joined handwriting style by the end of KS2. The children are given opportunities to demonstrate their handwriting style across the curriculum, embedding their skills; thereby demonstrating a mastery approach.

Monitoring and Review

Created in discussion with full

teaching team, formatted by Curriculum Lead, checked by SLT.

Our motto is: 'Let your light shine... as you grow', (inspired by Matthew 5: 15-16)

Our vision is: 'We nurture our pupils to be the best they can be in every way - in an inclusive and supportive environment, rooted in Christian teachings.'

Aa Bb Cc Dd Ee Ff

Gg Hh Ii Jj Kk Ll

Mm Nn Oo Pp Qq Rr

Ss Tt Uu Vv Ww Xx

Yy Zz

ai au ar ear ee er es

igh oa oi oo or ow ur

ed id est ing are ay oy

ey aw ce dge le ore ph

qu wh ve

the do to of said were was

is has you they he we so

there one come friend floor

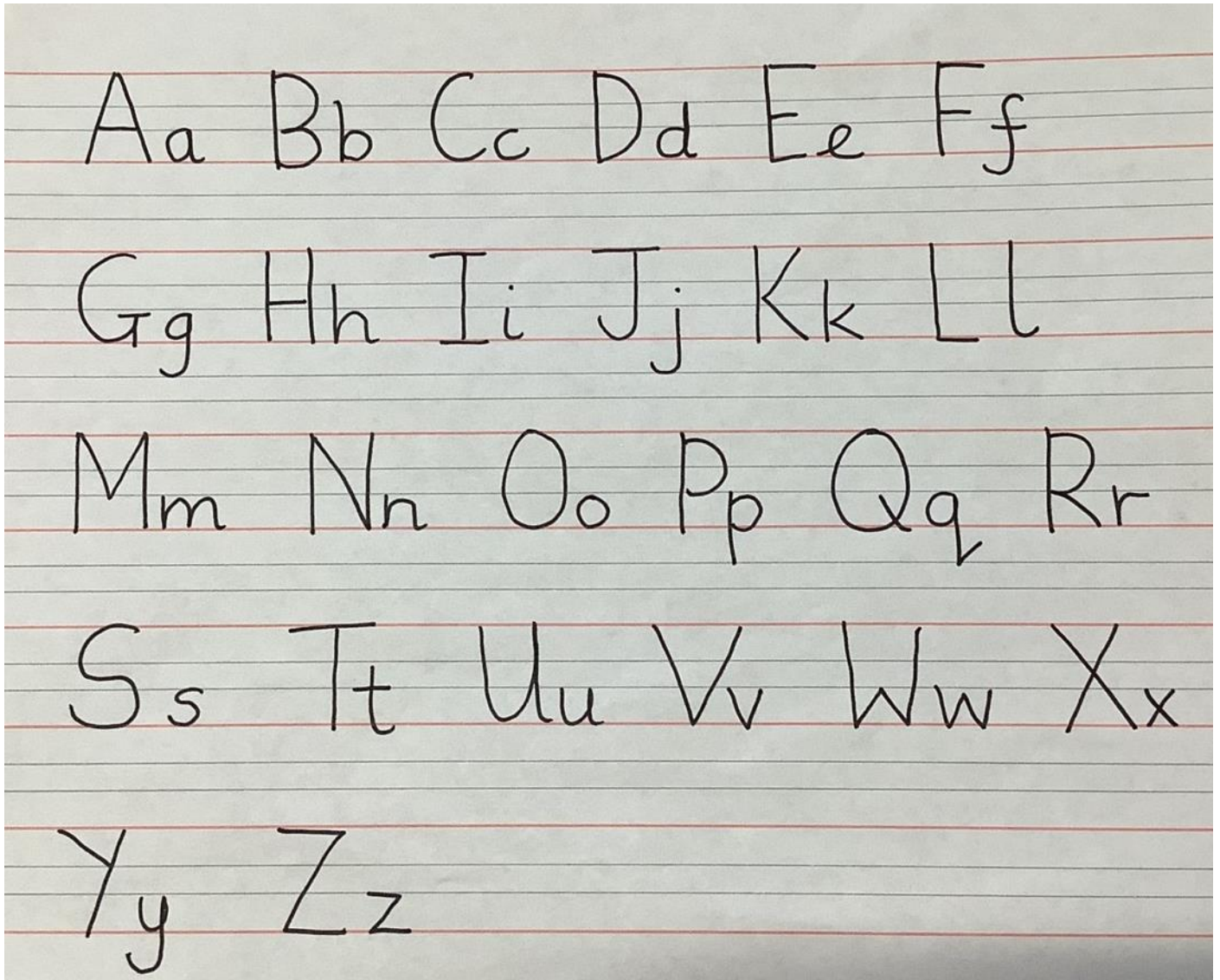
because children only every

fast after class should half

Our motto is: 'Let your light shine... as you grow', (inspired by Matthew 5: 15-16)

Our vision is: 'We nurture our pupils to be the best they can be in every way - in an inclusive and supportive environment, rooted in Christian teachings.'

Reception & Year 1



Number Formation

	1	2	3	4	5	
	6	7	8	9	0	

